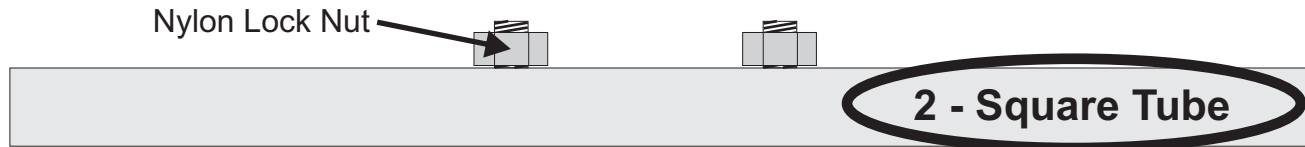


Fresh Air Exhaust - Platform Quick Release

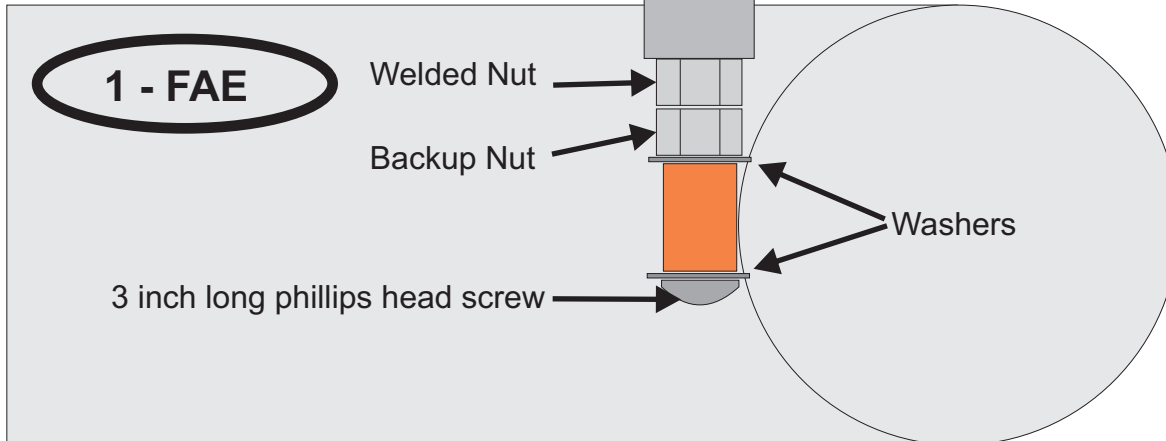
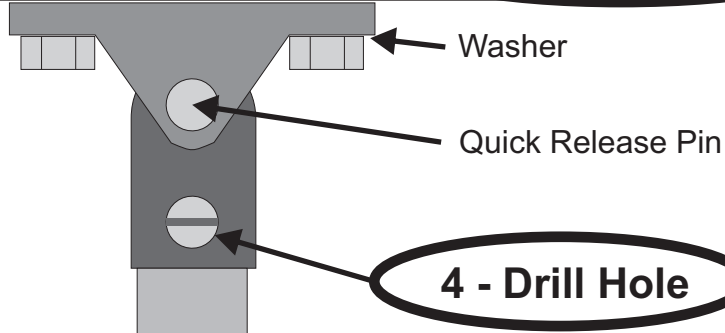


1 - Install FAE to the boat's exhaust outlets and position FAE correctly.

2 - Install the square tube to the swim platform.

3 - Determine the length of the round tube and cut accordingly.

4 - Drill a 3/16" hole through the tube and mount with the screw and nylon nut.



Your FAE Platform Quick Release has been shipped with extra nuts. They can be installed between the red rubber hose and the welded nut to adjust the height of the FAE.

You should use as least one nut as a Backup Nut tightened against the welded nut -or- use a thread locking compound (not included).